

# 肉昌

NIKUSHO  
DRINK  
MENU

10% VAT and 5% Service Charge excluded

Giá trên chưa bao gồm 10% thuế VAT và 5% phí dịch vụ

## Soft drink

|              |    |
|--------------|----|
| Coke Regular | 40 |
| Coke Zero    | 40 |
| Sprite       | 40 |
| Tonic Water  | 40 |
| Soda Water   | 40 |
| Ginger Ale   | 40 |



## Mineral Water

|                      |     |
|----------------------|-----|
| Alba Mineral Water   | 55  |
| Alba Sparkling Water | 65  |
| Thonon Mineral Water | 135 |
| Vals Sparkling Water | 135 |

## Mocktail

|                       |    |
|-----------------------|----|
| Virgin Passion Mojito | 89 |
| Fruit Punch           | 89 |
| Plum Frost Crush      | 89 |

## Seasonal Fresh Juice

|                         |    |
|-------------------------|----|
| Lime Juice              | 69 |
| Passion Juice           | 69 |
| Water Melon Fresh Juice | 69 |
| Mango Fresh Juice       | 69 |
| Apple Juice             | 69 |
| Orange juice            | 69 |
| Pineapple juice         | 69 |

# Kagoshima Tea

Kagoshima Tea Selections (Teapot) 95  
Sencha / Genmaicha / Hojicha

Cold Brewed Kagoshima Tea (Glass) 55  
Sencha / Hojicha



# Beer

Sapporo Draft beer 60

Truc Bach Bia 48

Saigon Bia 45

# Cocktail

Gin Tonic 160

Yuzu Mojito 160

Moscow Mule 160

Cassis Soda 160

Cassis Orange 160

Martini 160

Lemon Sour 160

Lime Sour 160

Shiso Sour 160

Mixberry Shochu Sangria 160

10% VAT and 5% Service Charge excluded

Giá trên chưa bao gồm 10% thuế VAT và 5% phí dịch vụ

# Shochu

By the glass 60ml  
On the rocks, with water or soda

|   |  | Bottle | Glass |
|---|--|--------|-------|
| <b>Flamingo Orange IMO 26%</b> (Kagoshima) 720ml  |  | 1,400  | 170   |
| Region: Japan / Distillery: Kokubu Shuzo<br>Tasting notes: Fruity and deep aroma  |  |        |       |
| <b>Daiyame IMO 25%</b> (Kagoshima) 900ml  |  | 1,500  | 150   |
| Region: Japan / Distillery: Hamada Syuzou<br>Tasting notes: Very aromatic, sweet, fruity shochu with the fragrance of fresh lychee. |  |        |       |
| <b>Ichico MUGI 25%</b> (Miyazaki) 720ml   |  | 1,200  | 140   |
| Region: Japan / Distillery: Sanwa Shurui<br>Tasting notes: Floral and fruity aromas with notes of apple and banana.                 |  |        |       |

# Japanese Sake

|   | 300ml | 720ml |
|---|-------|-------|
| <b>Kubota Senju Ginjo</b>   | 650   | 1,300 |
| Prefecture: Niigata / Rice variety: Gohyakumangoku<br>Tasting notes:   |       |       |
| <b>Dassai Junmai Daiginjo 39</b>  | 1,200 | 2,500 |
| Prefecture: Yamaguchi / Rice variety: Yamadanishiki<br>Tasting notes:  |       |       |
| <b>Dassai Junmai Daiginjo 23</b>  | 2,300 | 4,900 |
| Prefecture: Yamaguchi / Rice variety: Yamadanishiki<br>Tasting notes:  |       |       |
| <b>Shichiken Kinunoaji Junmai</b>   | 500   | 1,900 |
| Prefecture: Yamanashi / Rice variety: Yume Sansui<br>Tasting notes:    |       |       |
| <b>Dassai 45 Junmai Daiginjo</b>  | 850   | 1,800 |
| Prefecture: Yamaguchi / Rice variety: Yamadanishiki<br>Tasting notes:  |       |       |

# Japanese Sake

720ml

## Tokubetsu Honjozo Hakkaisan

1,500

Prefecture: Niigata / Rice variety: Gohyakumangoku, Todorokiwase & other

Tasting notes:



## Zaku Ho no Tomo Junmai

1,900

Prefecture: Mie / Rice variety: Yamadanishiki, Ukonnishiki

Tasting notes:



## Kokuryu Jungin Junmai Ginjo

2,300

Prefecture: Fukui / Rice variety: Gohyakumangoku

Tasting notes:



## Tatenokawa "Seiryu" Stream

1,900

Prefecture: Yamagata / Rice variety: Dewasansan

Tasting notes:



## Masumi Karakuchi Kippon Junmai

1,800

Prefecture: Nagano / Rice variety: Sankeinishiki, Miyamanishiki, Hitogokochi

Tasting notes:



## Komagura Junmai Gingjyo

1,600

Prefecture: Fukuoka / Rice variety: Yamadanishiki

Tasting notes:



900ml

## Asashibori Shuppintyozousyu Honjozo

1,600

Prefecture: Nagano / Rice variety: Local Rice

Tasting notes:



10% VAT and 5% Service Charge excluded

Giá trên chưa bao gồm 10% thuế VAT và 5% phí dịch vụ

# Japanese Liquor

|                                    | Bottle | Glass |
|------------------------------------|--------|-------|
| Tezukuri Umeshu Miyazaki 14% 720ml | 1,200  |       |
| Umeshu                             |        | 90    |

# Whiskey

By the glass 30ml □  
On the rocks, with water or soda

|  | Bottle | Glass |
|--|--------|-------|
| Dewar's WHITE LABEL<br>(Scotland)        | 1,600  | 120   |
| Suntory Kaku<br>(Japan)                  | 1,800  | 130   |
| Maker's Mark<br>(America)                | 1,900  | 150   |
| Jonnie Walker Double Black<br>(Scotland) | 1,900  | 180   |
| Chivas Regal Mizunara<br>(Scotland)      | 2,900  | 200   |
| Macallan 12yrs Double Cask<br>(Scotland) | 5,500  | 300   |
| Hakusyu Distiller's Reserve<br>(Japan)   | 7,500  | 420   |
| Hibiki Japanese Harmony<br>(Japan)       | 8,000  | 450   |



06-SM-M-272

  
CHAMPAGNE  
BILLECART-SALMON  
*Maison Fondée en 1888*

00-FF-M-211

  
CHAMPAGNE  
BILLECART-SALMON  
*Maison Fondée en 1888*

ON

10% VAT and 5% Service Charge excluded

Giá trên chưa bao gồm 10% thuế VAT và 5% phí dịch vụ

# Sparkling Wine Champagne



## Veuve Ambal Méthode Traditionnelle Blanc De Blancs

Bourgogne, France  
Chardonnay, Aligote | Alc: 11,5%

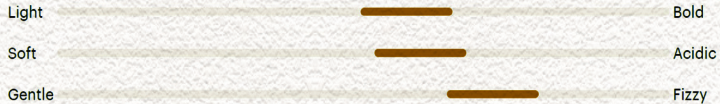
Bottle  
890



## Mionetto Prosecco

Veneto, Italy  
Glera | Alc: 11%

Bottle  
990



## Champagne Billecart-Salmon Brut Réserve 750ml & 375ml

Champagne, France  
Meunier, Chardonnay, Pinot Noir | Alc: 12%

Bottle  
375ml: 2,600  
750ml: 3,800



## Champagne Billecart-Salmon Brut Rosé

Champagne, France  
Meunier, Chardonnay, Pinot Noir | Alc: 12%

Bottle  
5,100



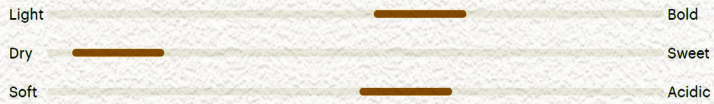
# White Wine



## La Vieille Ferme, Blanc

Rhône Valley, France  
Bourboulenc, Grenache Blanc, Ugni Blanc, Roussanne | Alc: 13,5%

Bottle  
890  
Glass  
150



## Dr. Loosen Bros. Riesling

Mosel, Germany  
Riesling | Alc: 8,5%

Bottle  
880



## Rèmele Toscana Bianco

Tuscany, Italy  
Vermentino, Trebbiano | Alc: 12%

Bottle  
1,100



10% VAT and 5% Service Charge excluded

Giá trên chưa bao gồm 10% thuế VAT và 5% phí dịch vụ

# White Wine



## Greywacke Sauvignon Blanc

Marlborough, New Zealand  
Sauvignon Blanc | Alc: 13,5%

Bottle  
1,500



## Louis Latour Macon-Lugny Les Genièvres

Bourgogne, France  
Chardonnay | Alc: 13%

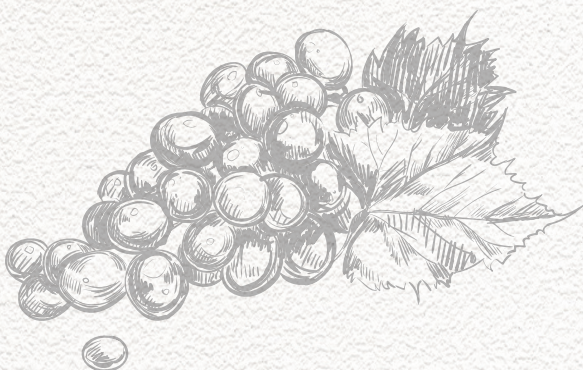
Bottle  
1,900



## Faiveley Bourgogne Chardonnay

Bourgogne, France  
Chardonnay | Alc: 12,5%

Bottle  
2,700



# Red Wine

## Half-bottle Wine (375ml)



### Santa Carolina Vistana Cabernet Sauvignon-Merlot, 375ml

Central Valley, Chile  
Cabernet Sauvignon, Merlot | Alc: 13%

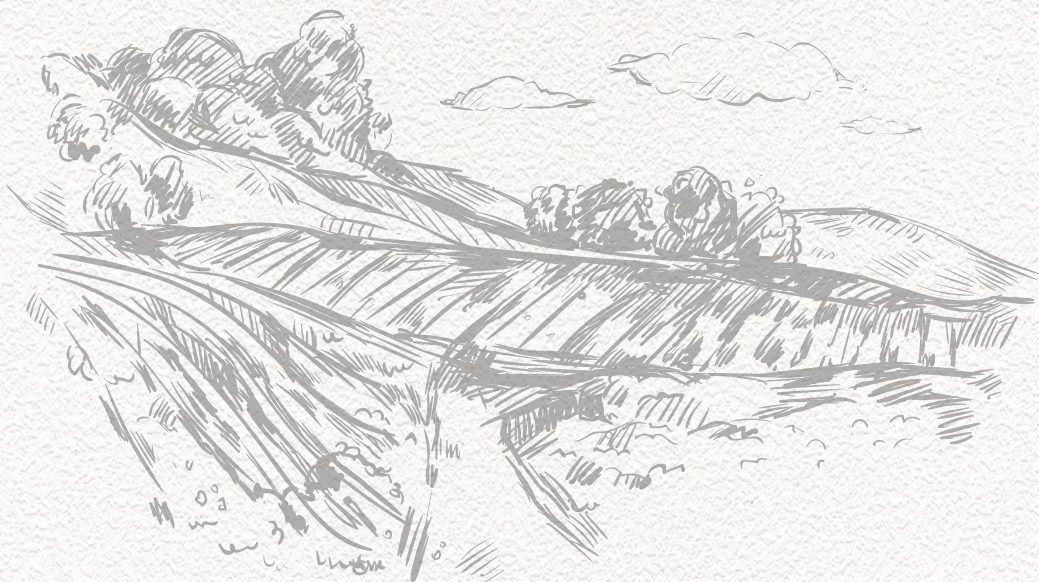
Bottle  
350



### Dourthe NO1 Rouge, 375ml

Bordeaux, France  
Merlot, Cabernet Sauvignon | Alc: 14,5%

Bottle  
680



10% VAT and 5% Service Charge excluded  
Giá trên chưa bao gồm 10% thuế VAT và 5% phí dịch vụ

# Red Wine

## French Wines



### La Vieille Ferme Rouge

Rhône Valley, France  
Carignan, Cinsault, Grenache, Syrah | Alc: 13,5%

Bottle  
890

Glass  
150



### D de Dauzac

Bordeaux, France  
Cabernet Sauvignon, Merlot | Alc: 13,5%

Bottle  
1,200



### Crocus L'Atelier

Cahors, France  
Malbec | Alc: 13,5%

Bottle  
1,600



### Château de Marsannay, Bourgogne du Château

Bourgogne, France  
Pinot Noir | Alc: 13%

Bottle  
2,500



### Aurore De Dauzac

Margaux/ Bordeaux, France  
Merlot, Cabernet Sauvignon | Alc: 13,5%

Bottle  
2,900



# Red Wine

## French Wines



### Faiveley Bourgogne Pinot Noir

Bourgogne, France  
Pinot Noir | Alc: 13%

Bottle  
2,700



## Italian Wines



### Caravaggio Bacchus Montepulciano d'Abruzzo

Abruzzo, Italy  
Montepulciano | Alc: 14%

Bottle  
900



### Castellare Di Castellina Chianti Classico

Chianti Classico/ Tuscany, Italy  
Sangiovese | Alc: 13,5%

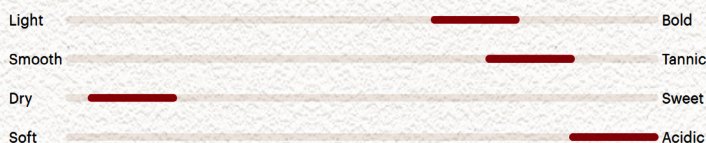
Bottle  
2,600



### Produttori Del Barbaresco

Barbaresco/ Piemonte, Italy  
Nebbiolo | Alc: 15%

Bottle  
3,600



10% VAT and 5% Service Charge excluded

Giá trên chưa bao gồm 10% thuế VAT và 5% phí dịch vụ

# Red Wine



## Spanish Wines



### Cune Rioja Organic

Rioja, Spain

Garnacha, Tempranillo, Graciano | Alc: 13,5%

Bottle  
1,500



### Bela Ribera Del Duero

Ribera Del Duero, Spain

Tinta del País (Tempranillo) | Alc: 14%

Bottle  
1,600



## American Wines



### Robert Mondavi

#### Private Selection Cabernet Sauvignon

California/ Napa Valley, the USA

Cabernet Sauvignon | Alc: 13,5%

Bottle  
2,200



### Antica

#### Cabernet Sauvignon Mountain Select

California/ Napa Valley, the USA

Cabernet Sauvignon | Alc: 14,7%

Bottle  
4,200



# Red Wine

## Others



### Lapostolle Apalta

Apalta, Chile  
Cabernet Sauvignon, Merlot, Carmenère, Cabernet Franc, Syrah  
Alc: 14,5%

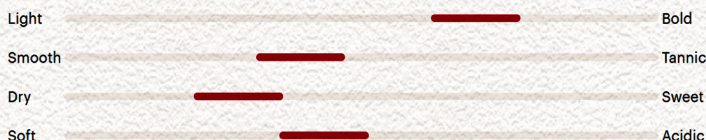
Bottle  
1,600



### Salentein Barrel Selection Malbec

Uco Valley/ Mendoza, Argentina  
Malbec | Alc: 14%

Bottle  
1,600



### Torbreck Woodcutter's Shiraz

Barossa Valley, Australia  
Shiraz | Alc: 15%

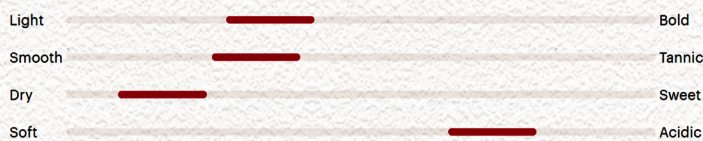
Bottle  
2,200



### Greywacke Pinot Noir

Marlborough, New Zealand  
Pinot Noir | Alc: 13%

Bottle  
2,400





肉昌

NIKUSHO

Japanese Wagyu  
BBQ